

EVACUATING DISABLED PERSONS

Techniques for evacuating disabled persons vary with the nature of the disability. If a person with a disability cannot evacuate, they should be moved to a designated enclosed fire stairwell that is a good distance away from the hazard.

Designated disabled emergency evacuation areas have been established and are clearly marked "Disabled Staging Area" in the following locations.

A-Core Building:

- Lower Level – LB Corridor Inside Stair #7 and LF Corridor Inside Stair #4
- 1st Floor – 1D Corridor in Front of Cafeteria (Handicap Ramp Situated at Liberty Ave entrance/exit on 1st floor)
- 2nd Floor – 2D Corridor in Stairwell #2
- 3rd Floor – 3D Corridor Next to Stair #2, 3F Corridor Next to Stair #3 & Inside of Library Next to Stair #9. 3H Corridor next to Stair #11
- 4th Floor – 4F Corridor Next to Stair #3 and 4M Corridor Next to Stair #8

Classroom Building:

- Stairway adjacent to the elevator.

Science Building:

- Stairway adjacent to the elevator.
- Lower Level Exit to Evans Road

HPE Building:

- Lower Level Exit to South Field

Public Safety maintains class schedules and office locations of all disabled students who may require assistance when evacuating. Public Safety Officers will check these locations along with the "Disabled Staging Area" during evacuations.

Always ask a disabled person how you can help before giving emergency evacuation assistance. Ask how they can best be assisted or moved, and if there are any special considerations or items that need to come with them.

- ◆ For persons with mobility impairments, it may be necessary to help clear the exit route of debris, if possible.
- ◆ For persons with a visual disability, give verbal instructions while assisting in an evacuation. Do not grasp a visually impaired person's arm. Ask if he or she would like to hold your arm as you exit, especially in crowds or debris covered areas.
- ◆ For persons with auditory disabilities, get the attention of the person by touch or eye contact. Gestures and pointing are helpful, but be prepared to write a brief statement if that person does not seem to understand.
- ◆ Do not use elevators unless authorized by FDNY personnel.
- ◆ Do not attempt a rescue evacuation unless you had rescue training or the person is in immediate danger and cannot wait for professional assistance.



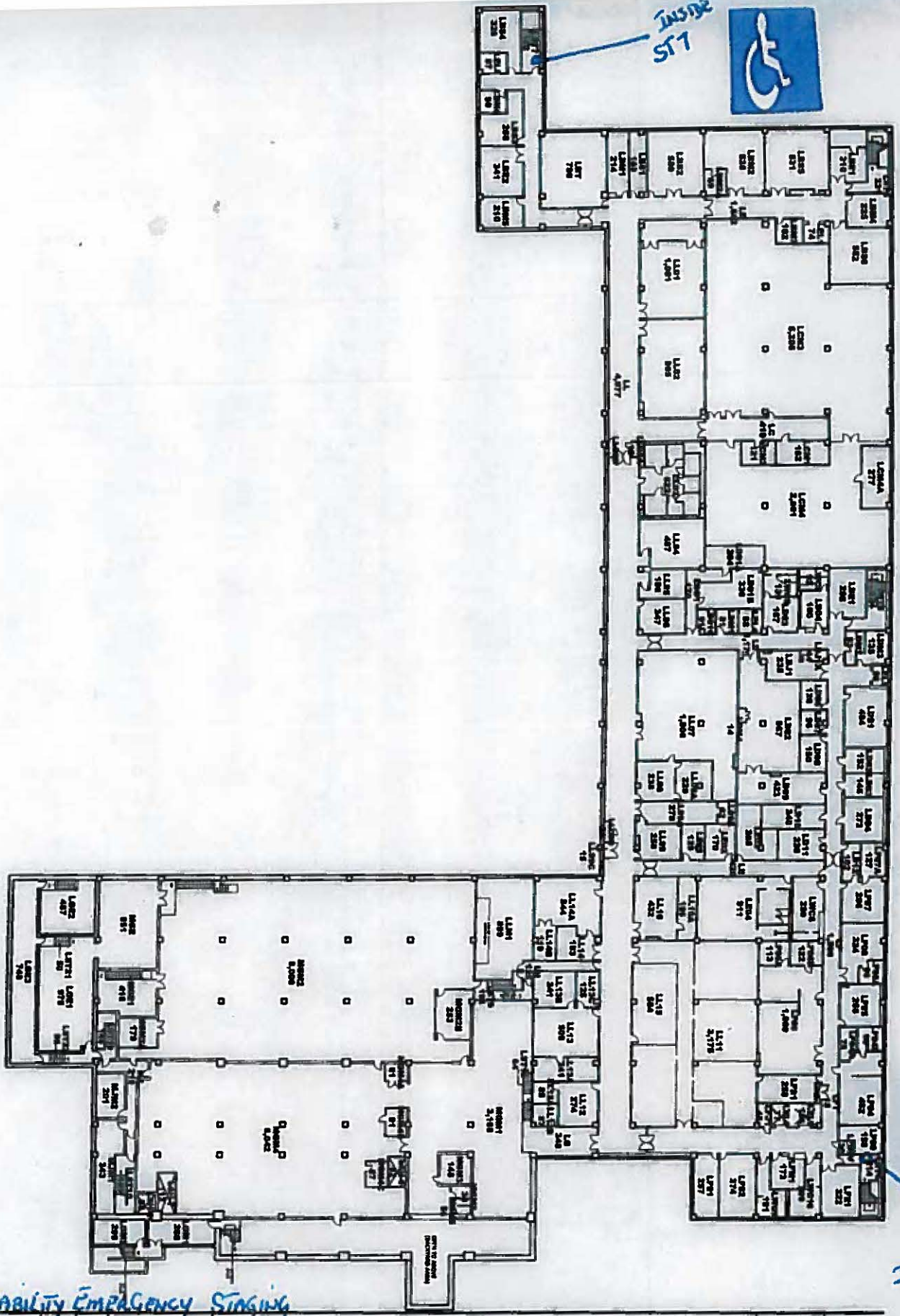
CALL PUBLIC SAFETY 714-847-8333

**EVACUATION
ASSEMBLY
AREA**



onal
ement





ST 1
INSIDE



ST 4
INSIDE



Disability Emergency Staging

Not To Scale
DATE: 12/15/2014
JANUARY 2014
YORK-AC-LL

LOWER FLOOR PLAN

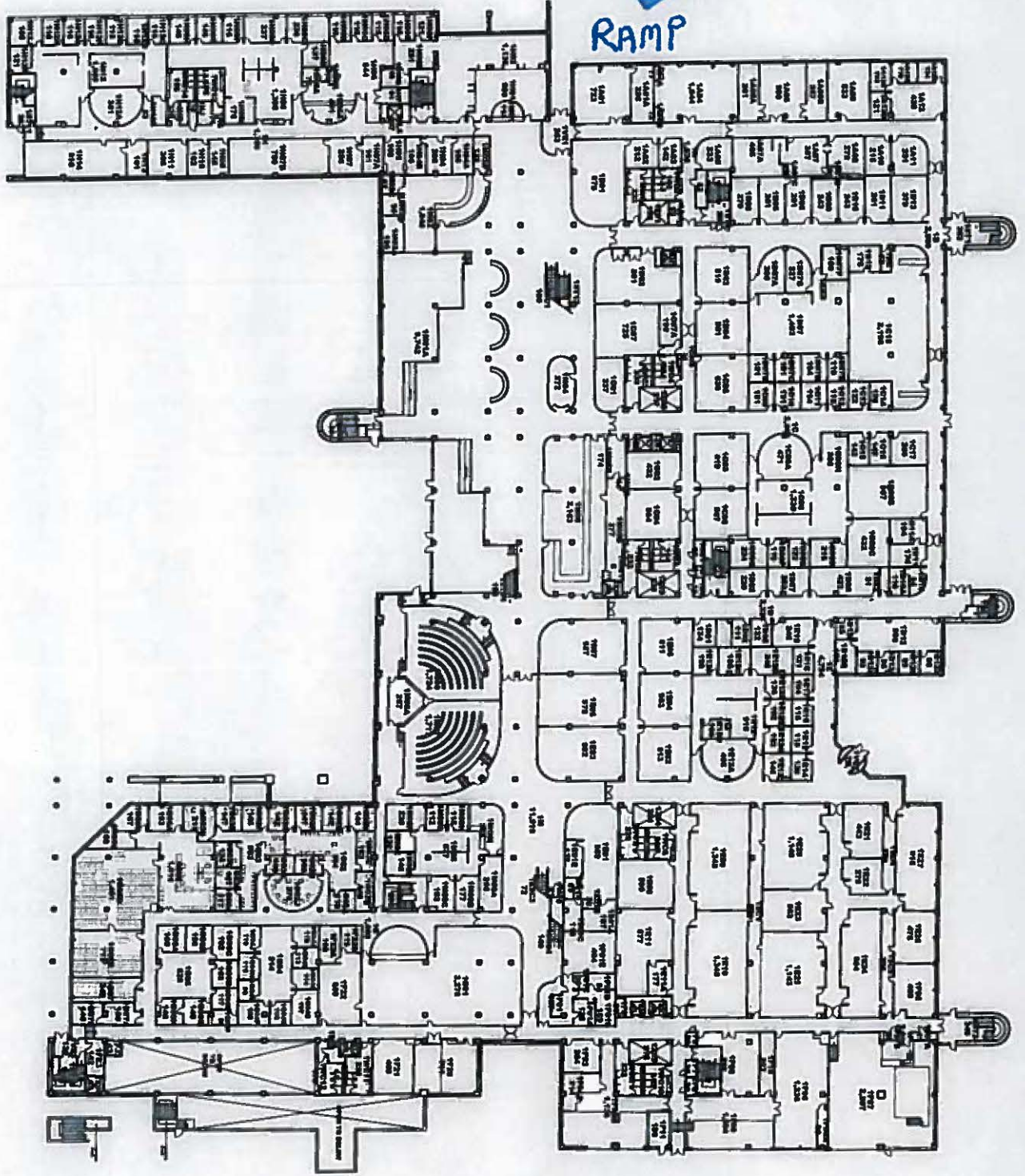
ACADEMIC CORE YORK COLLEGE

LWR LL AT ST 4 & ST 7

THE CITY UNIVERSITY OF NEW YORK
CONSTRUCTION MANAGEMENT
320 WEST 27TH STREET NEW YORK, NY 10001



RAMP



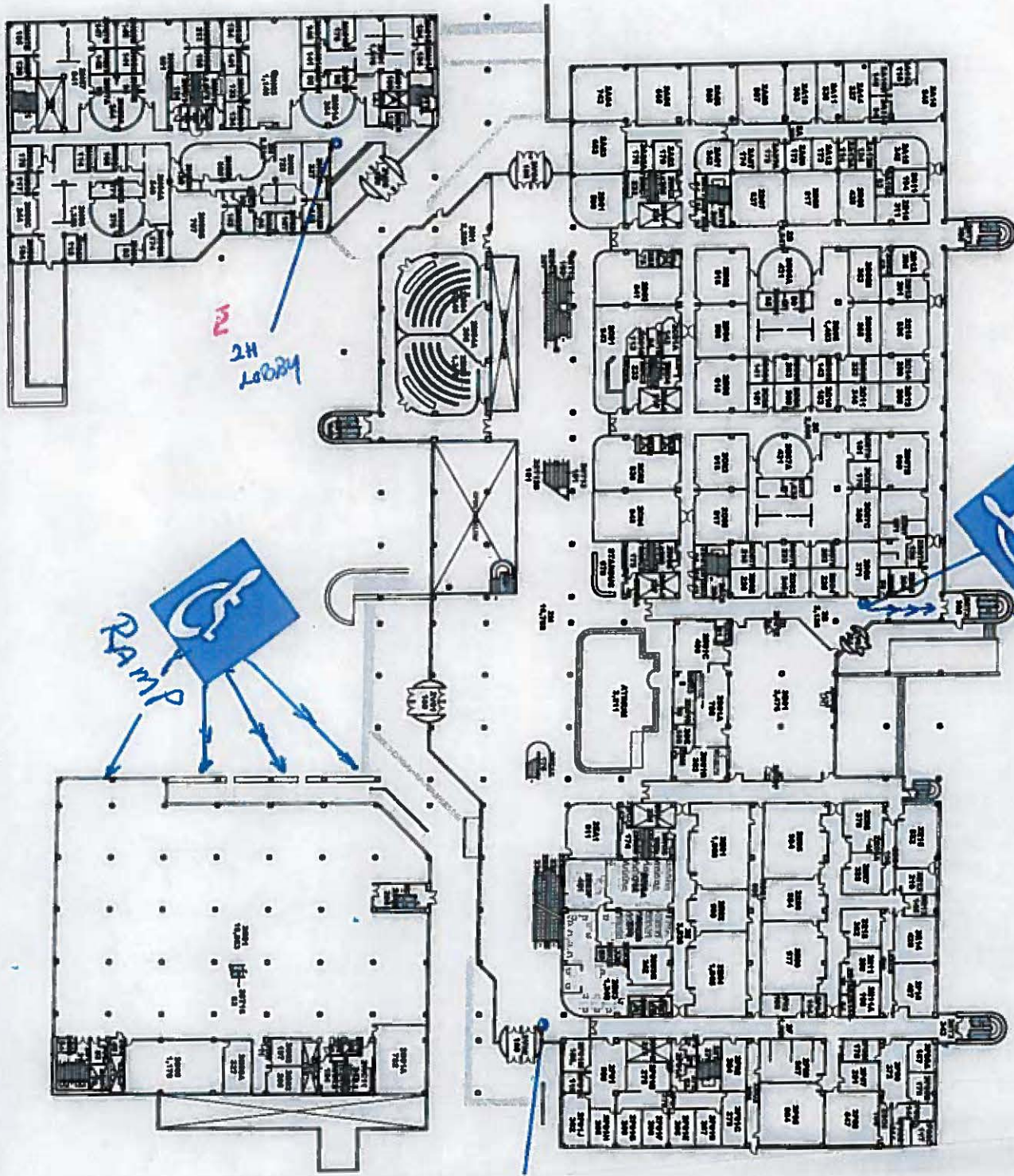
ACADEMIC CORE YORK COLLEGE



Facilities Planning and
Construction Department
305 West 27th Street, Room 11
New York, N.Y. 10001

Project Title:
**FIRST
FLOOR
PLAN**

Scale:
Not To Scale
Date of Revision:
JANUARY 2014
Drawing File No:
YORK-AC-01



DISABILITY EMERGENCY STAGING

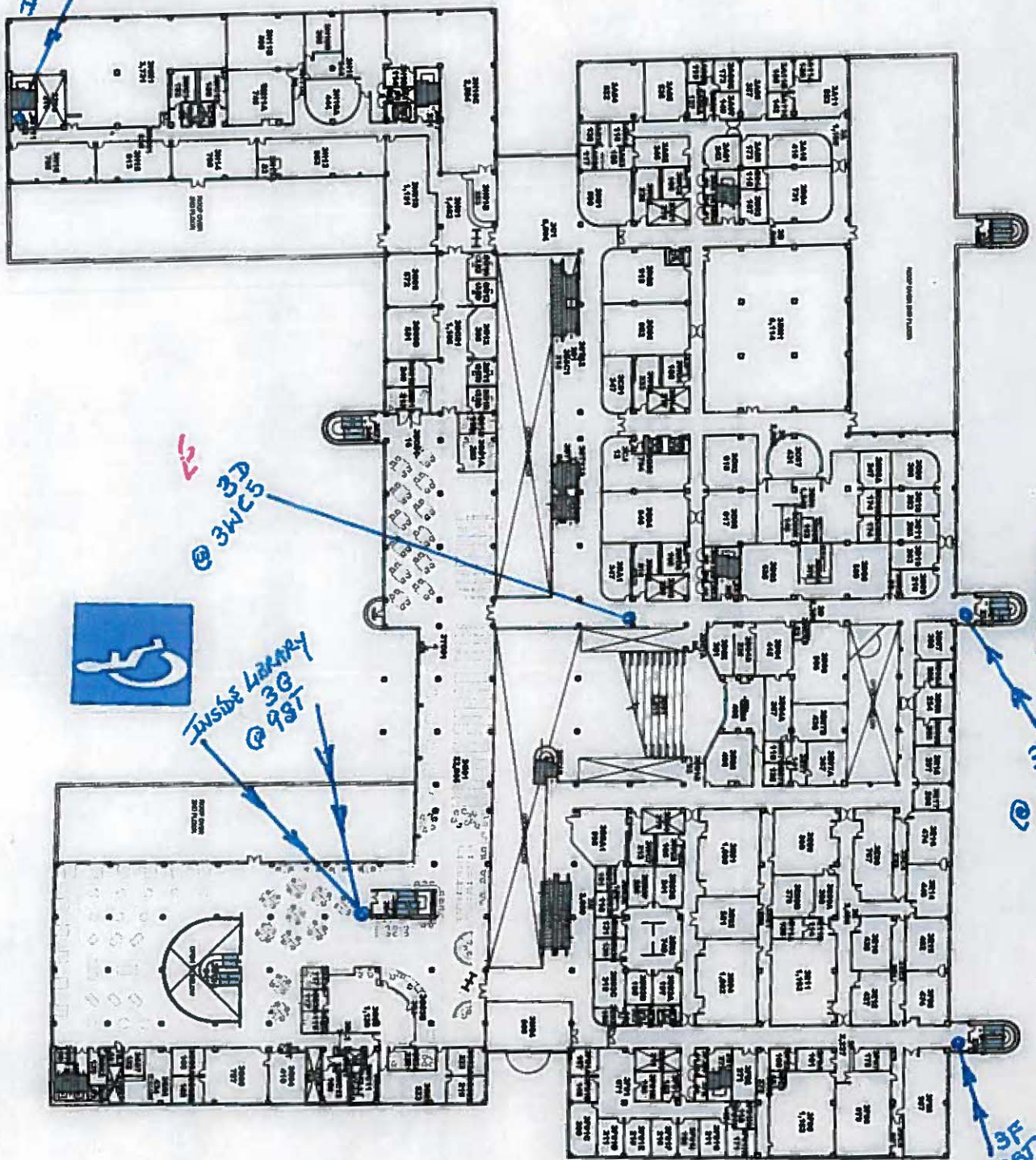
**ACADEMIC CORE
YORK COLLEGE**

SECOND FLOOR
 FLOOR PLAN
 JANUARY 2014
 YORK-AC-02

The City
 of New York
 Department of Social Planning
 and Community Services
 500 West 57th Street 10th Fl.
 New York, N.Y. 10019
 (212) 312-3124

2m, 2D

3H INSIDE ST 11



DISABILITY EMERGENCY STAGING 02/16/16

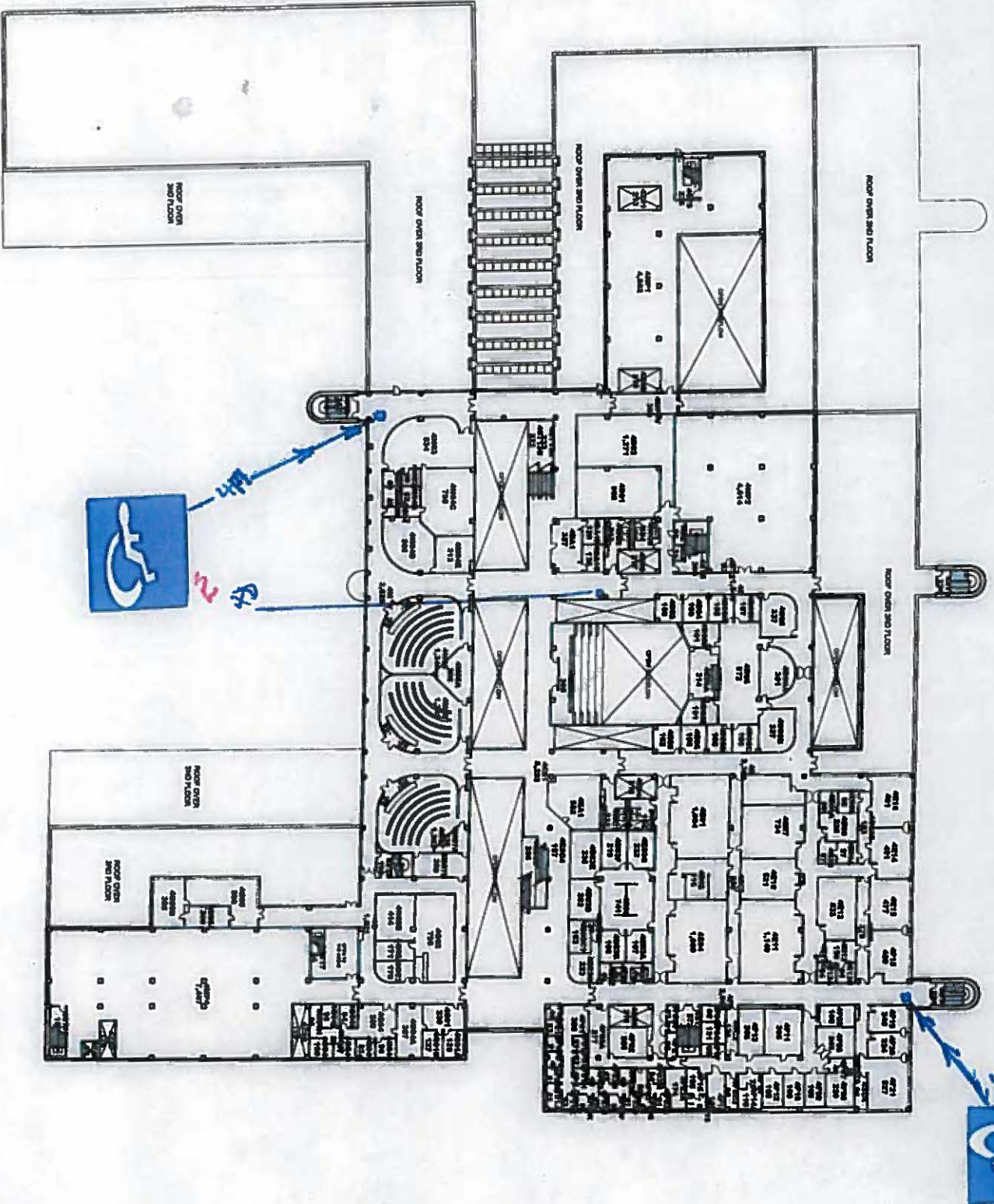
Net To Scale
JANUARY 2014
YORK-AC-03

THIRD FLOOR PLAN

ACADEMIC CORE YORK COLLEGE

3D, 3F, 3H, 3G

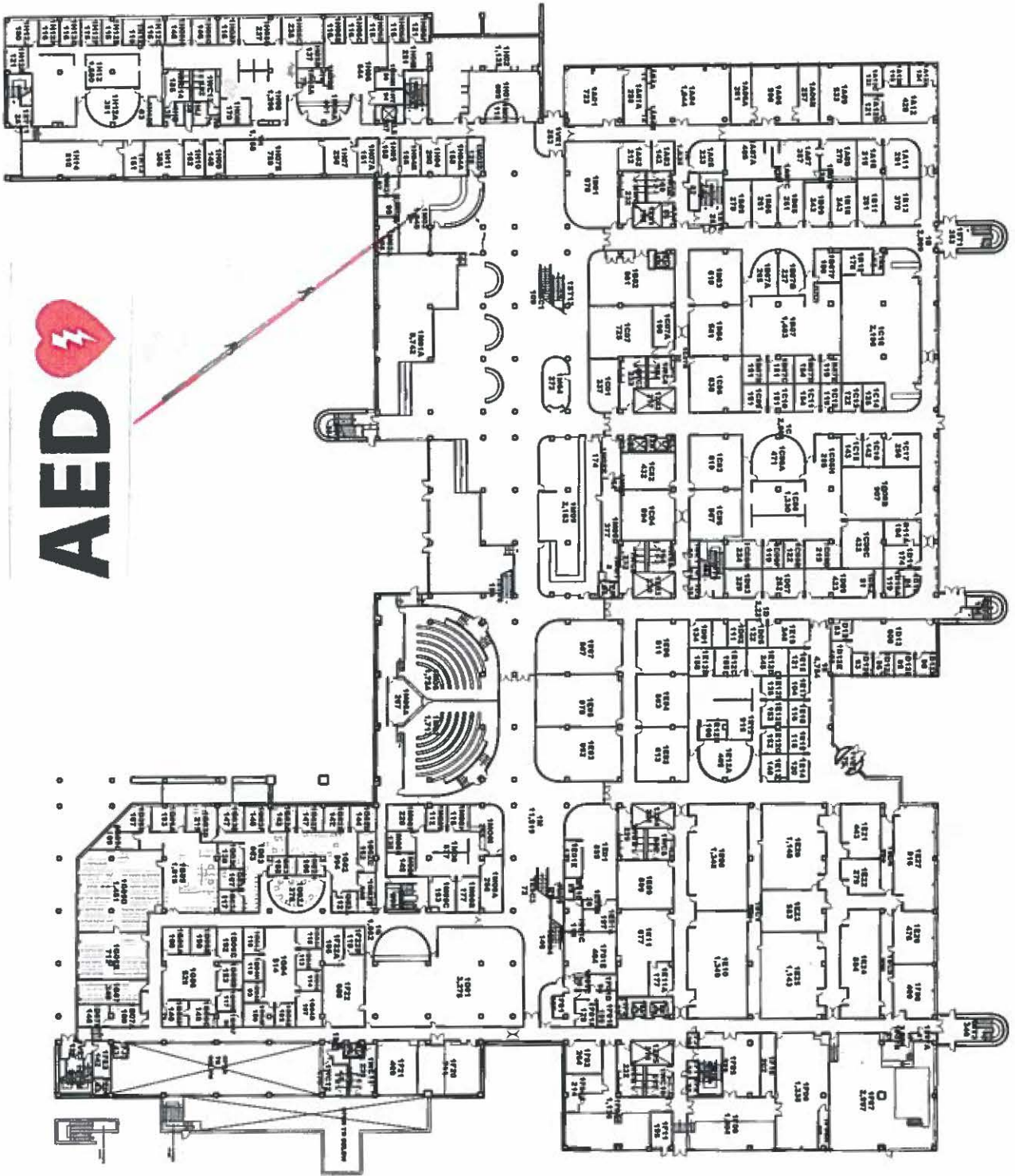
The City of New York
The City University of New York
Academic Planning and Construction Management
230 WEST 37TH STREET 23RD FL.
NEW YORK, N.Y. 10018



Disability Emergency Staging 02/16/16

	DEPARTMENT OF STUDENT PLACEMENT AND CAREER SERVICES 400 WEST 57TH STREET, 8TH FL. NEW YORK, NY 10019 (212) 840-6444
	ACADEMIC CORE YORK COLLEGE
DRAWING TITLE: FOURTH FLOOR PLAN	DATE OF REVISION: JANUARY 2014
DRAWING FILE NO: YORK-AC-04	TITLE: Net To Scale

4F & 4M



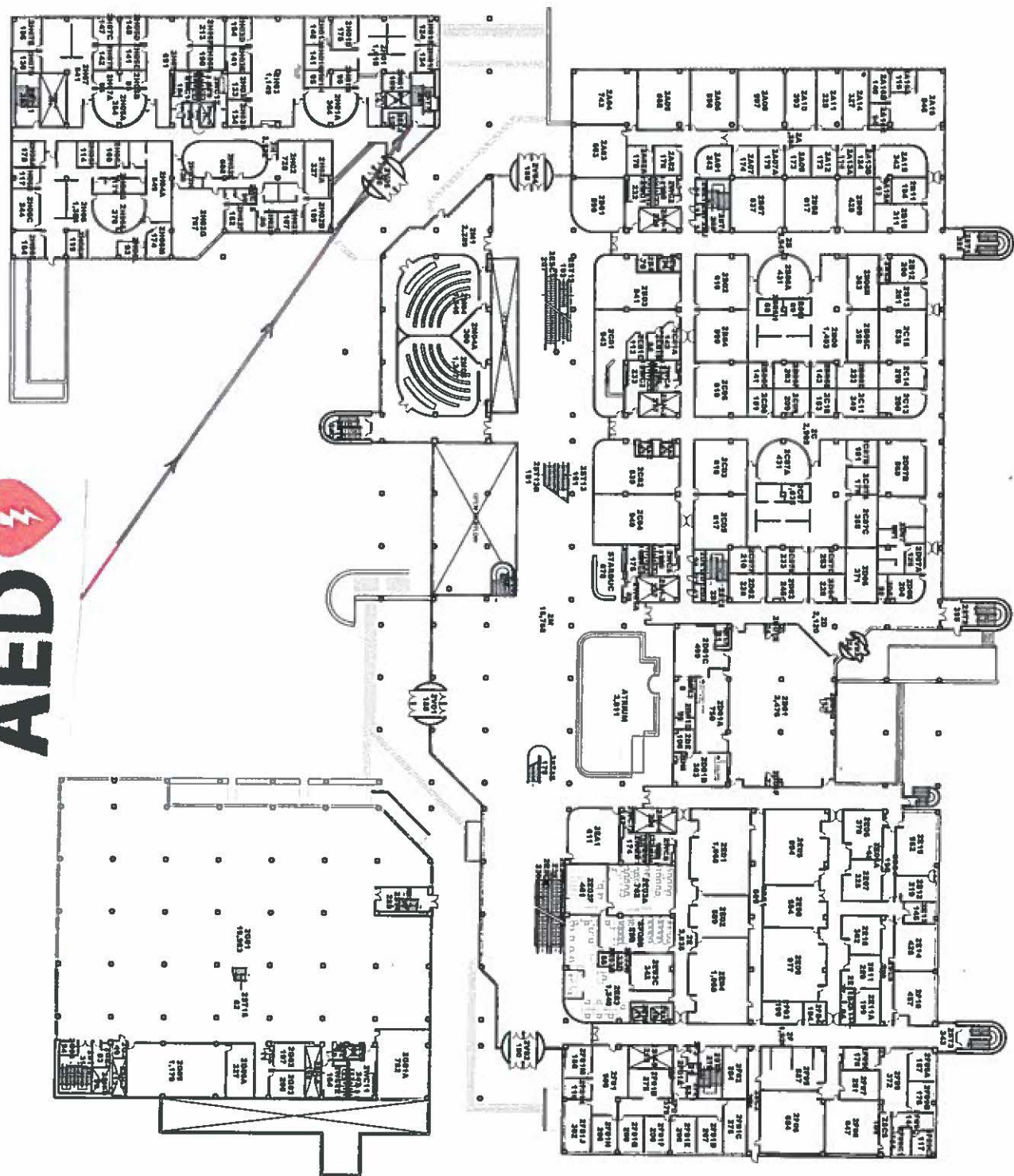
ACADEMIC CORE YORK COLLEGE

DATE: 1/13/14
**FIRST
 FLOOR
 PLAN**

Scale:
 Not To Scale
 DATE OF REVISION:
JANUARY 2014
 DRAWING FILE NO:
YORK-AC-01

CU The City
NY University
 of New York
 FACILITY PLANNING AND
 CONSTRUCTION MANAGEMENT
 555 WEST 57TH STREET 15TH FL.
 NEW YORK, NY 10019

2nd Floor, 2H LOBBY -- On wall between Stairs # 2ST 7 & Elevator #8.



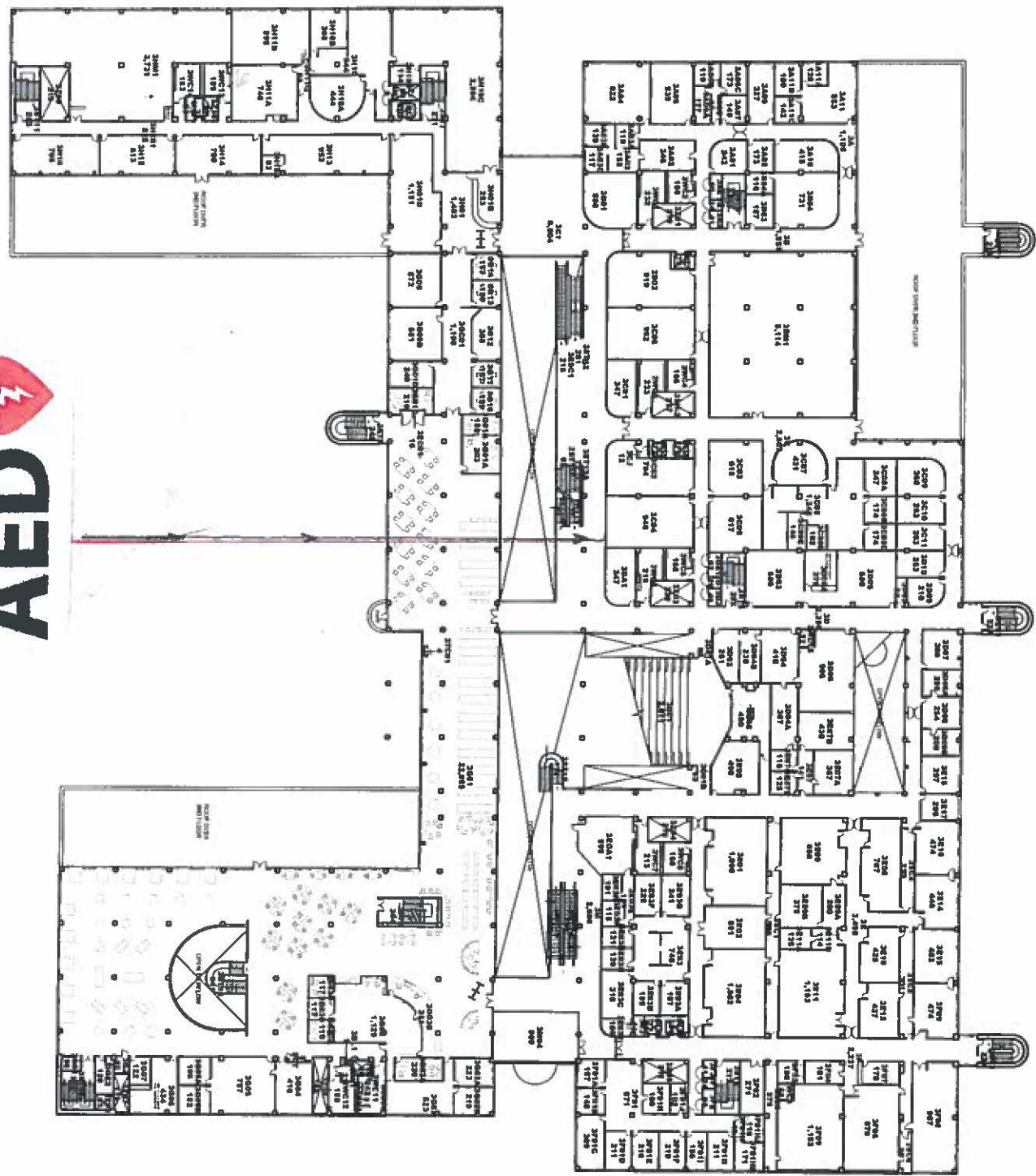
Scale:
 Not To Scale
 Date of Revision:
 JANUARY 2014
 Drawing File No:
 YORK-AC-02

Drawn Title:
SECOND FLOOR PLAN

ACADEMIC CORE YORK COLLEGE

The City of New York
 Department of State Planning
 and Capital Budget
 635 West 27th Street (3rd Fl.)
 New York, N.Y. 10019
 (212) 512-0640

3rd Floor. On wall outside AC-3D01A opposite Stairs # 3ST13A.



DATE:	JANUARY 2014
SCALE:	Not To Scale
DATE OF REVISION:	
DRAWING FILE NO.:	YORK-AC-03

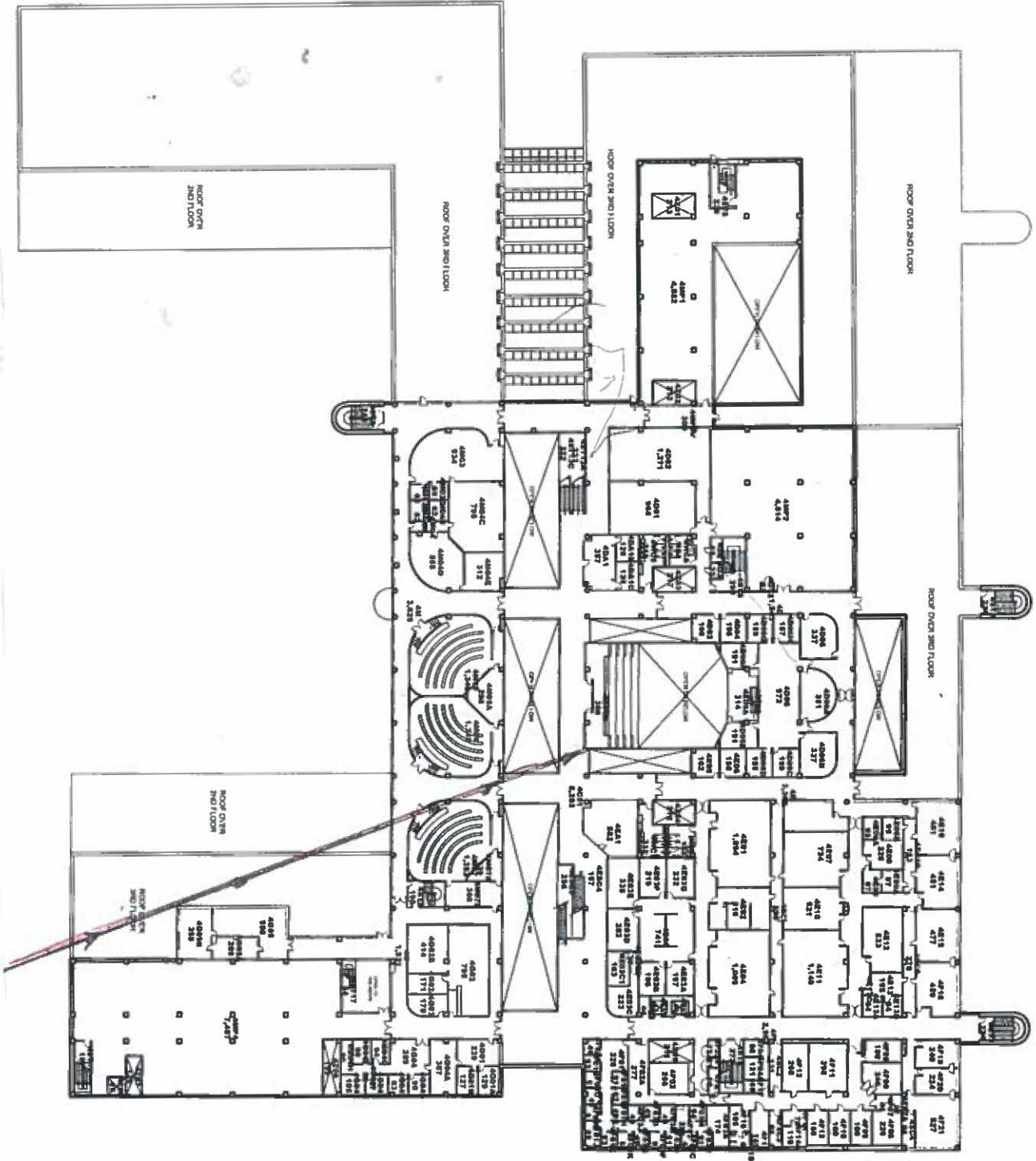
ACADEMIC CORE YORK COLLEGE



 FACILITY PLANNING AND
 CONSTRUCTION MANAGEMENT
 575 WEST 87TH STREET, 10th FL.
 NEW YORK, NY 10024

AED

4th Floor. On wall (north side) right of exit door of 4E06B.



ACADEMIC CORE

YORK COLLEGE

CU
The City
of
NY
University
of
New York

DEPARTMENT OF SPACE PLANNING
AND CAPITAL BUDGET
335 WEST 57TH STREET 6TH FL.
NEW YORK, NY 10019
(212) 512-0020

DATE OF REVISION:
JANUARY 2014

PROJECT FILE NO:
YORK-AC-04

SCALE:
Not To Scale

DATE OF REVISION:
JANUARY 2014

PROJECT FILE NO:
YORK-AC-04